

The European Commission's science and knowledge service

Joint Research Centre



The ASEM Sustainable Connectivity Portal

Ana Rita Neves

W. Becker, M. Domínguez-Torreiro, C. Moura, M. Saisana

10th Asia-Europe Parliamentary Partnership Meeting | Brussels | 28 September 2018

Timeline

Definition of
ASEM connectivity
adopted by ASEM



November 2017



Competence Centre
on Composite INDicators
and Scoreboards



October 2018



Launch of the
ASEM Sustainable
Connectivity Portal

Why a Portal?

Measure

To provide a comprehensive and technically sound measurement framework and monitor progress over time.

Discuss

To support ASEM discussions, help to underpin areas for cooperation and policy formulation.

Communicate

To enhance the visibility of ASEM and its role as a platform for cooperation between Asia and Europe.

Inspire

To inspire further research in the still uncharted territory of ASEM sustainable connectivity.

The ASEM definition of connectivity

Connectivity is about ...

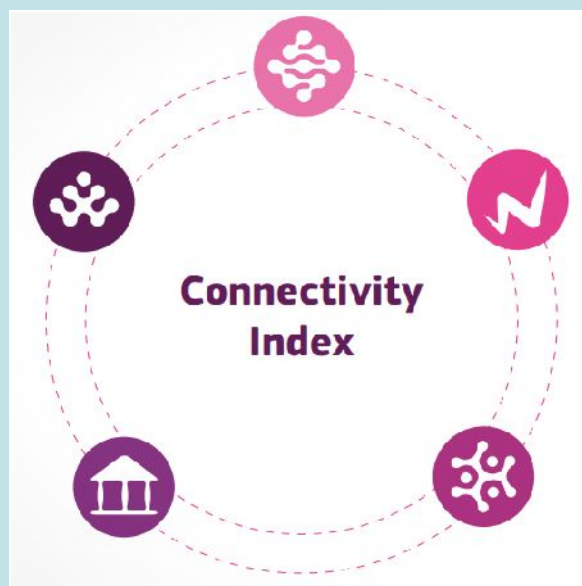
- ... bringing countries, people and societies together.
- ... enhancing the economic, political-security, and socio-cultural ties between Asia and Europe.
- ... covering transport, digital links, energy, education, research, tourism, institutions ...
- ... contributing to the The 2030 Agenda for Sustainable Development.

But how can
we measure it?

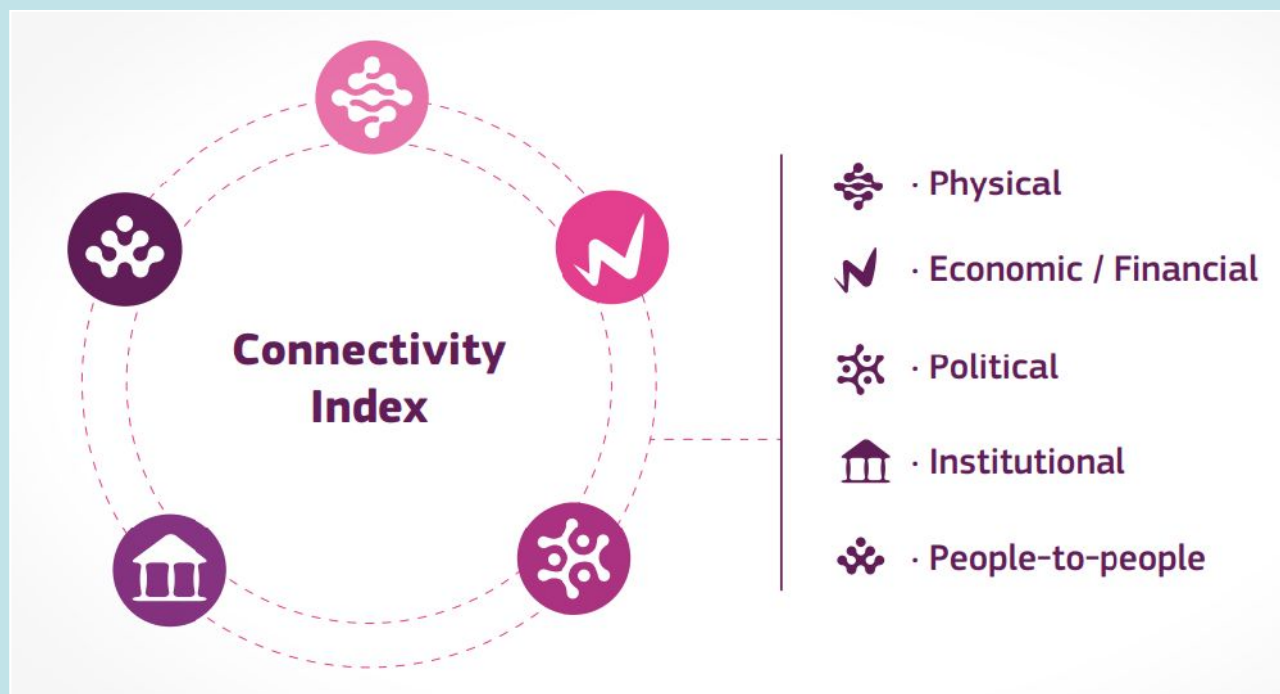


How to measure?

2 Indexes combining **49** indicators



How to measure?



Measures connectivity and facilitators

5 pillars

30 indicators

How to measure?



Physical

- International flights passenger capacity
- Trade in electricity

...



Economic/Financial

- Trade in goods
- Foreign direct investment

...



Political

- Embassies network
- UN voting alignment

...



Institutional

- Regional trade agreements
- Visa-free or visa-on-arrival

...

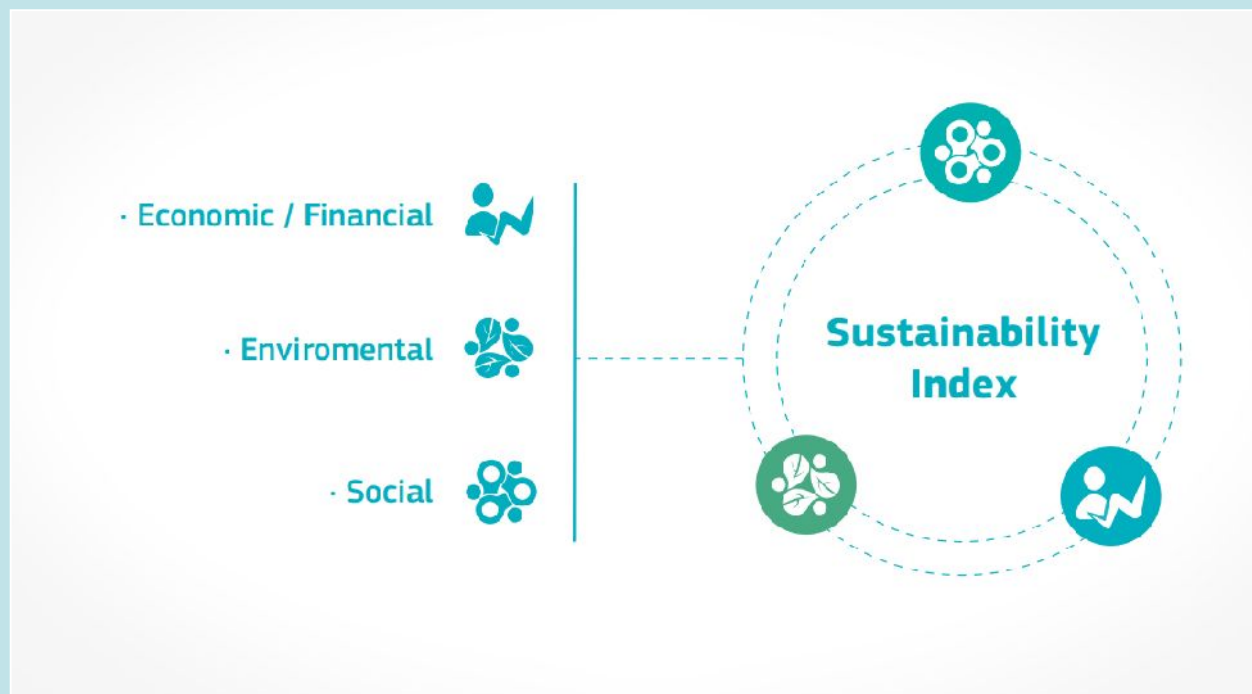


People-to-people

- Student mobility in tertiary education
- Tourist arrivals at national borders

...

How to measure?



Measures sustainability linked to connectivity

3 pillars

19 indicators

How to measure?



Environmental

- Renewable energy in final energy use
- CO₂ emissions per capita
- ...



Social

- Population living below the international poverty line
- Women's participation in national parliaments
- ...



Economic/Financial

- GDP per capita growth
- R&D expenditure as a percentage of GDP
- ...

And how does
it reach you?



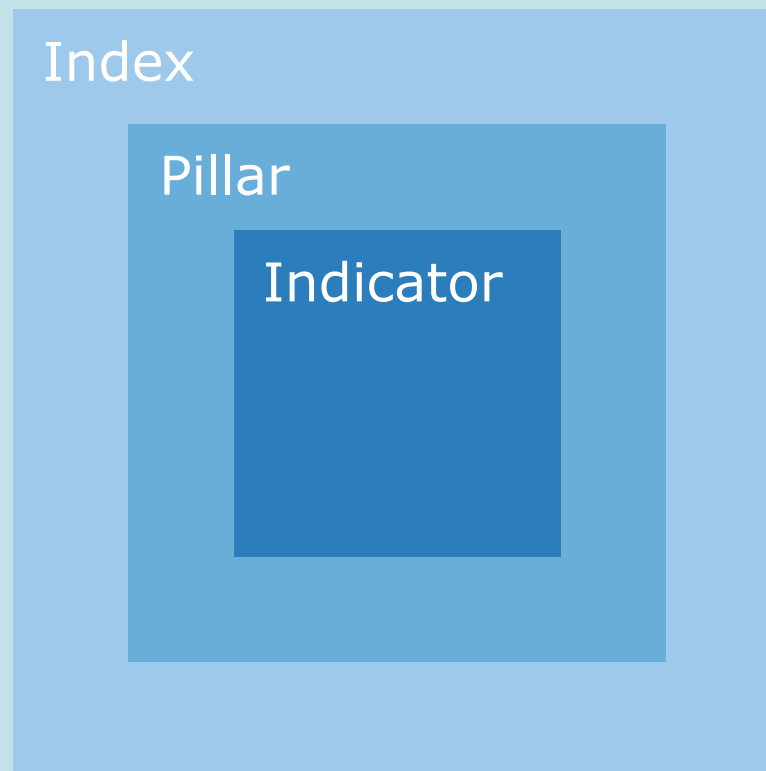


ASEM

Sustainable Connectivity Portal

What can you find in the Portal?

The Portal offers the opportunity to drill down...



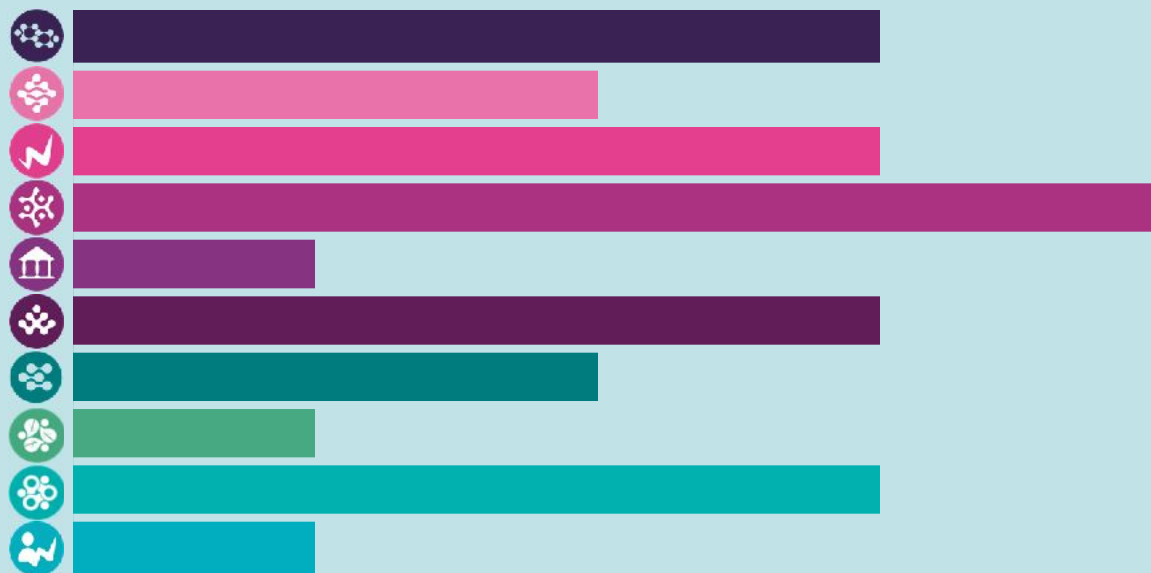
What can you find in the Portal?

To discover how countries are connected to each other...



What can you find in the Portal?

To zoom in and get a country snapshot...

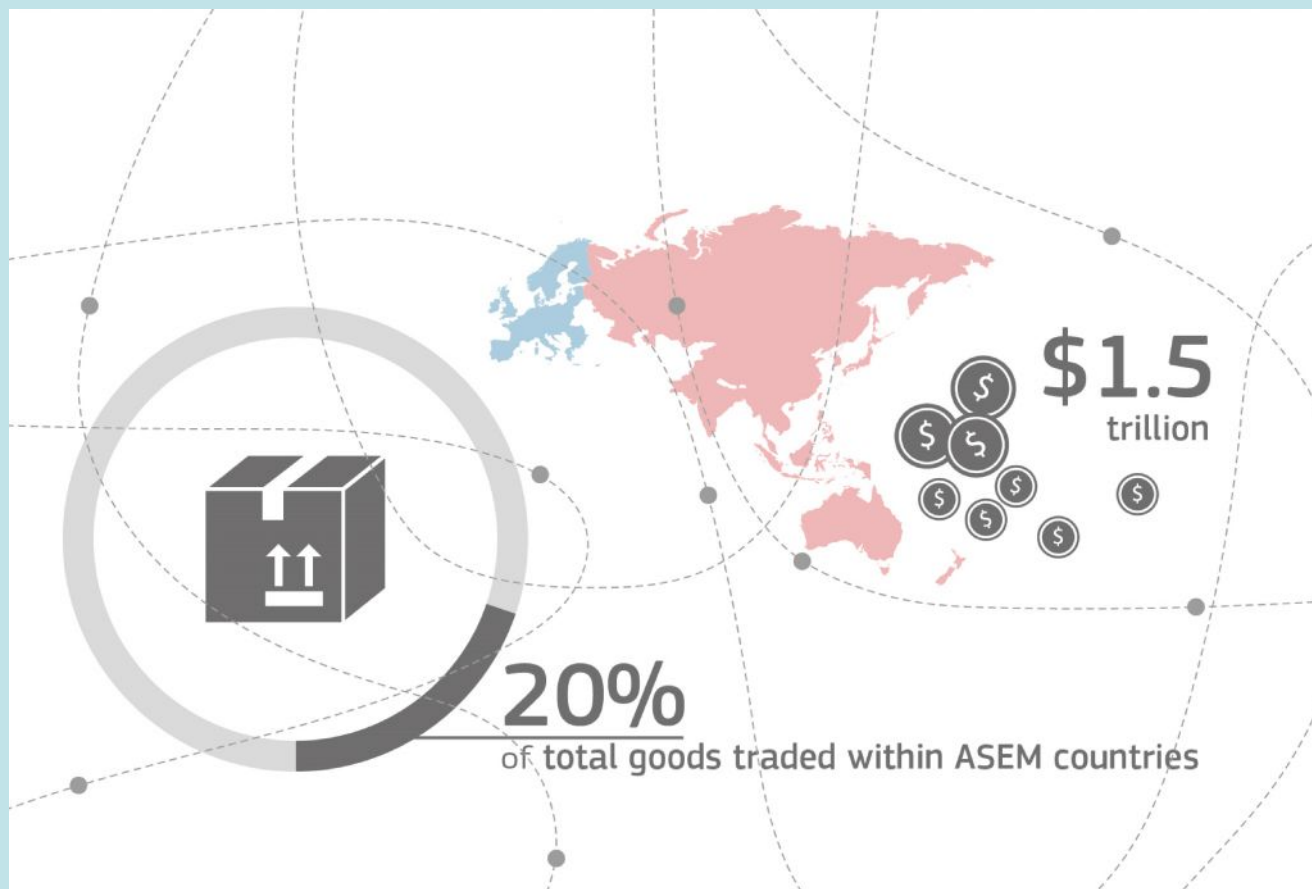


A magnifying glass with a black handle and a silver rim is positioned over a background of vibrant, diagonal rainbow stripes. The lens of the magnifying glass is focused on the blue and green stripes, making them appear larger and more detailed. The overall image conveys a sense of investigation and data analysis.

What does
the data say?

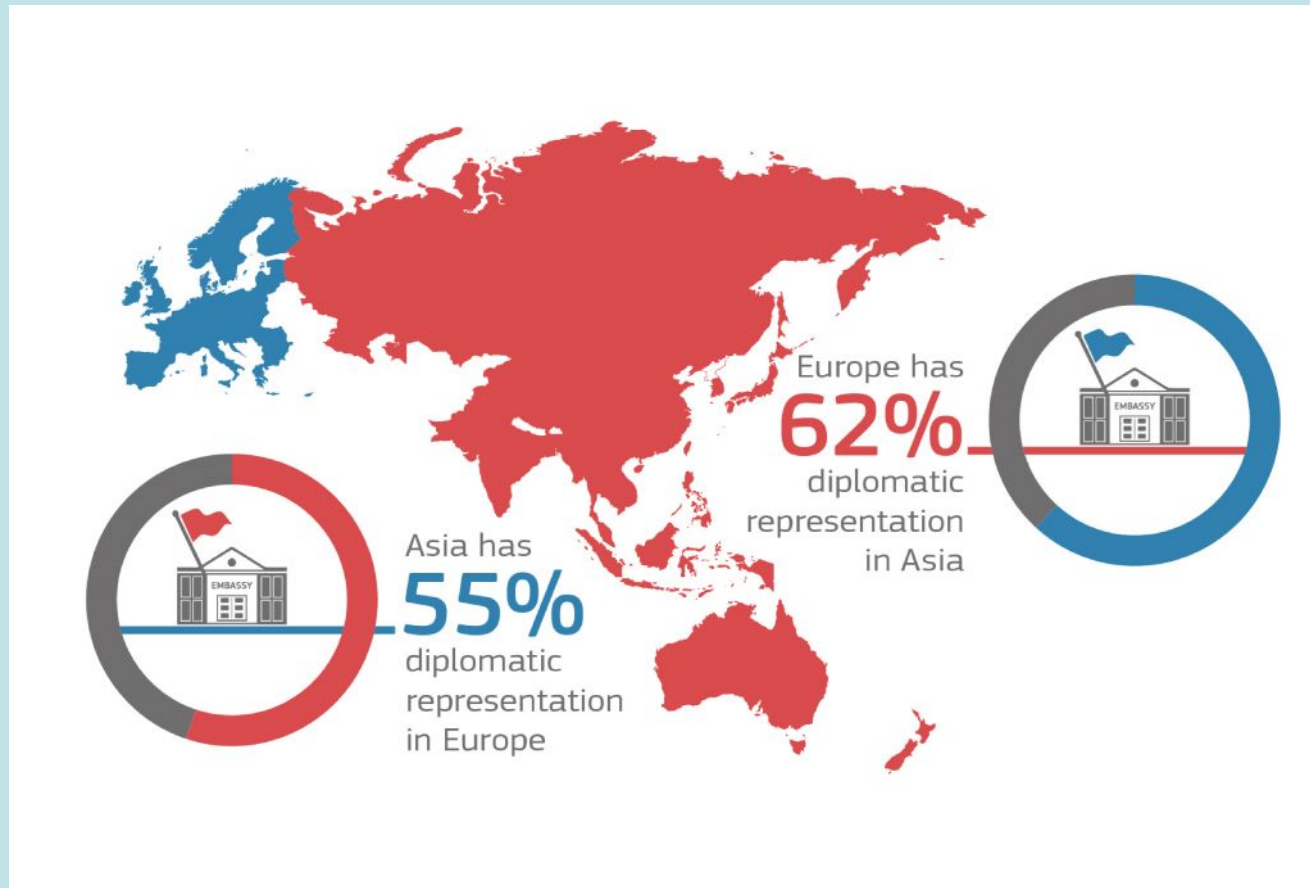


Asia and Europe have deep economic ties



Asia and Europe have a strong diplomatic network

POLITICAL



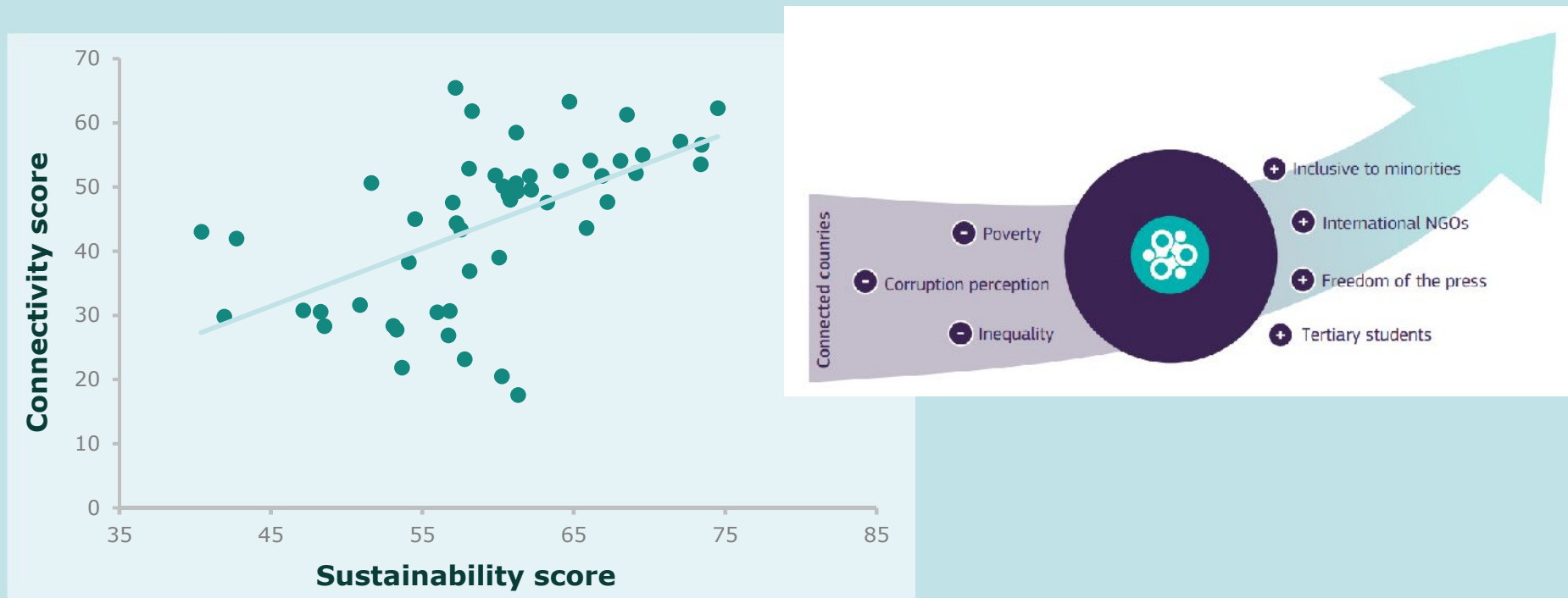


Asia and Europe are partners in higher education exchanges



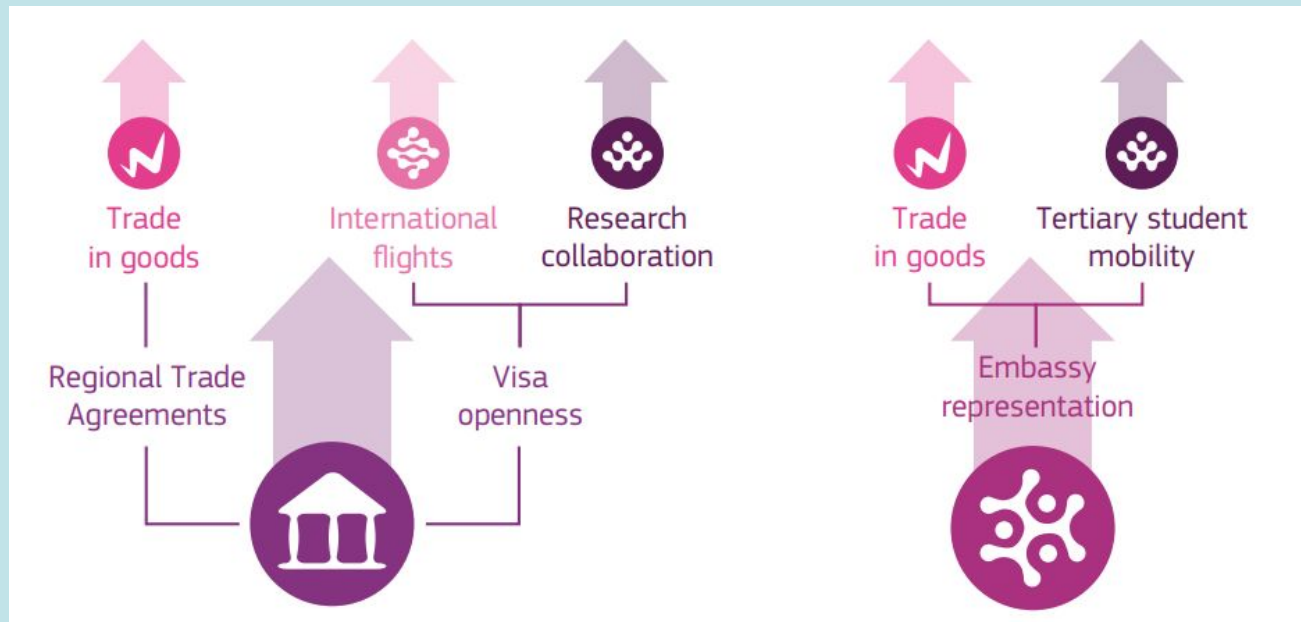
Connectivity can help to achieve the Sustainable Development Goals

Higher levels of connectivity are usually coupled with higher levels of sustainability, in particular social sustainability



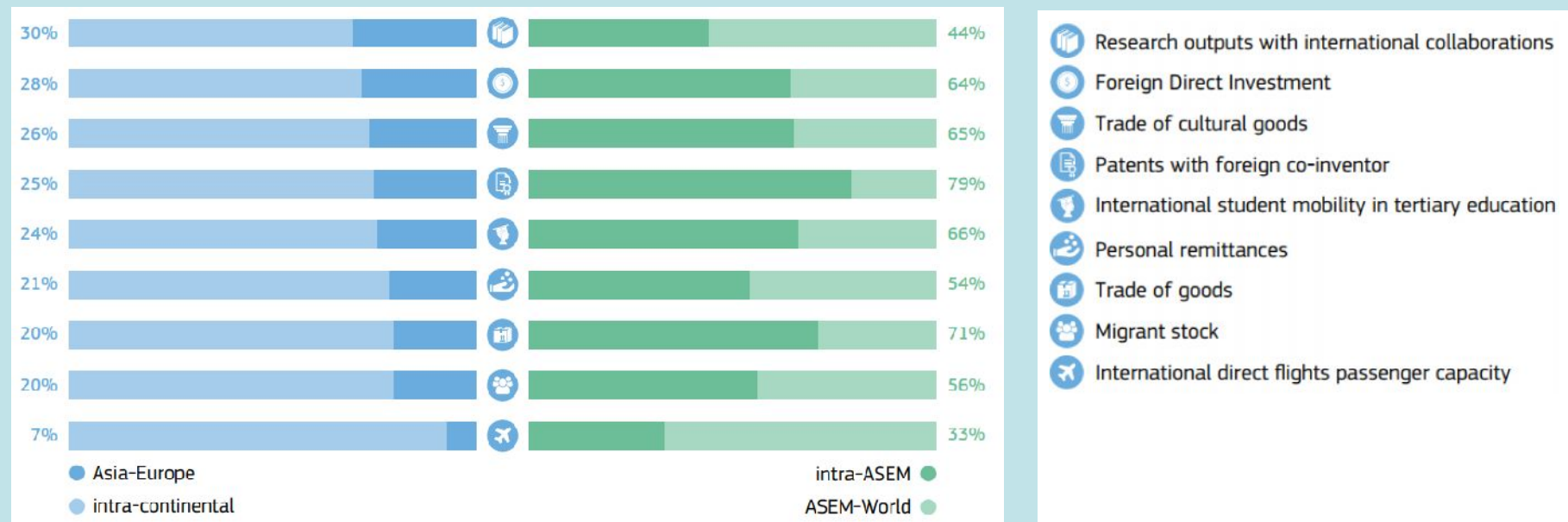
Political and institutional links are a cost-effective way to advance in connectivity

Political and institutional connectivity are less limited by a country's GDP size and lead to tangible connectivity outcomes.



Ties within ASEM are stronger than with the rest of the world

But there is still an untapped potential for boosting cooperation between Asia and Europe.



Launch 15.10.2018

<https://composite-indicators.jrc.ec.europa.eu/asem-sustainable-connectivity>

bit.ly/asemportal








Thanks

ana.neves@ec.europa.eu

Extra

Framework of Indicators

ASEM Connectivity Index framework of indicators

	Physical	1. Logistics Performance Index
		2. ⇄ International flights passenger capacity
		3. Liner Shipping Connectivity Index
		4. Border crossings
		5. ⇄ Trade in electricity
		6. ⇄ Trade in gas
		7. Average connection speed
		8. Population covered by at least a 4G mobile network
	Economic/Financial	9. ⇄ Trade in goods
		10. Trade in services
		11. ⇄ Foreign direct investment
		12. ⇄ Personal remittances (received and paid)
	Political	13. Foreign portfolio investment liabilities and assets
		14. ⇄ Embassies network
		15. Participation in international intergovernmental organisations
		16. ⇄ UN voting alignment
	Institutional	17. Cost to export/import
		18. Mean tariff rate
		19. Technical barriers to trade
		20. Signatory of TIR Convention
	People- to-people	21. ⇄ Regional trade agreements
		22. ⇄ Visa-free or visa-on-arrival
		23. ⇄ International student mobility in tertiary education
		24. ⇄ Research outputs with international collaborations
		25. ⇄ Patents with foreign co-inventor
		26. Trade in cultural and creative services
		27. ⇄ Trade in cultural goods
		28. Tourist arrivals at national borders
		29. ⇄ Migrant stock
		30. ⇄ Common language users

ASEM Sustainability Index framework of indicators

	Environmental	31. Renewable energy in total final energy consumption
		32. Primary energy use per capita
		33. CO ₂ emissions per capita
		34. Domestic material consumption per capita
		35. Net forest loss
	Social	36. Population living below the international poverty line
		37. Palma Index
		38. Tertiary graduates
		39. Freedom of the press
		40. Tolerance for minorities
		41. Presence of international non-governmental organisations
		42. Corruption Perceptions Index
		43. Female labour-force participation
	Economic/Financial	44. Women's participation in national parliaments
		45. Public debt as a percentage of GDP
		46. Private debt, loans and debt securities as a percentage of GDP
		47. GDP per capita growth
		48. R&D expenditure as a percentage of GDP
		49. Proportion of youth not in education, employment or training

... and many more

